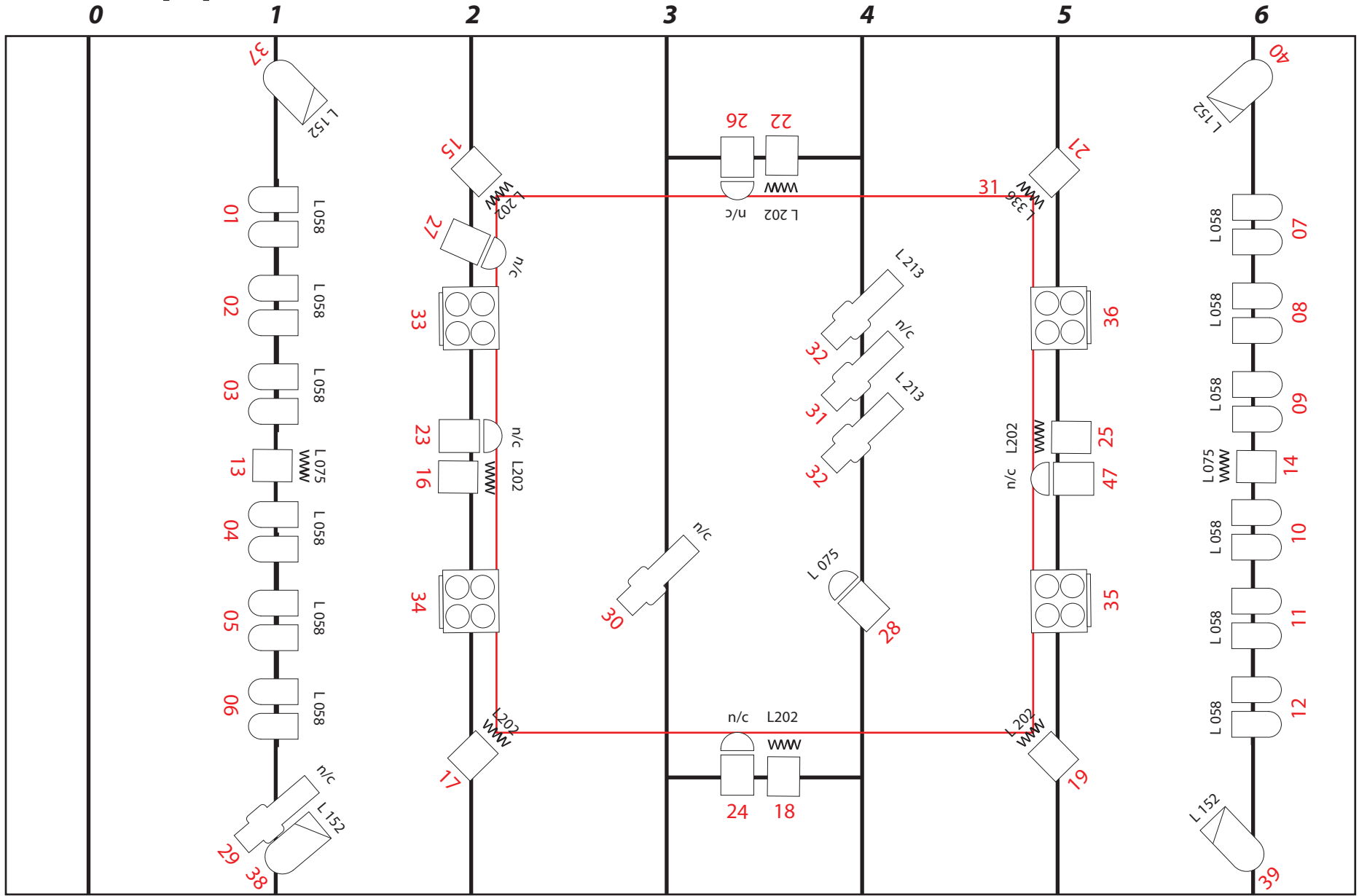


tanzstück: Uppercut

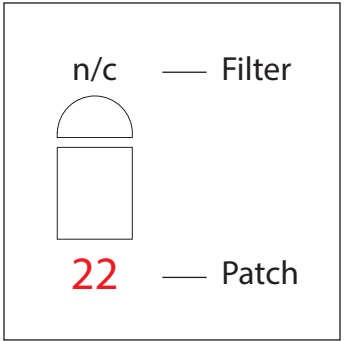
ROTES VELO TANZKOMPANIE Light design: emiliohdiazabregu@gmail.com



REFERENCIAS

Simbol	Denominación	amount
	PROFILE 50*	02
	PAR 64 MEDIUM	04
	PAR 64 WIDE	24
	Blinder	04
	PC 1000 w	06
	Fresnel 1000 w	10

41(an extra channel is needed at the corner of the carpet)



The lights were design in a site specific manner for the Graben Halle (St Gallen) It can only be used as a reference for future presentations in different venues. For an accurate light plan a rider from the new location is required.